





MR. LIKEY
"Not Now But Right Now!"
SOLO EXHIBITION
9-26 May, 2019



Mr. Likey (李啟)

About Mr. Likey

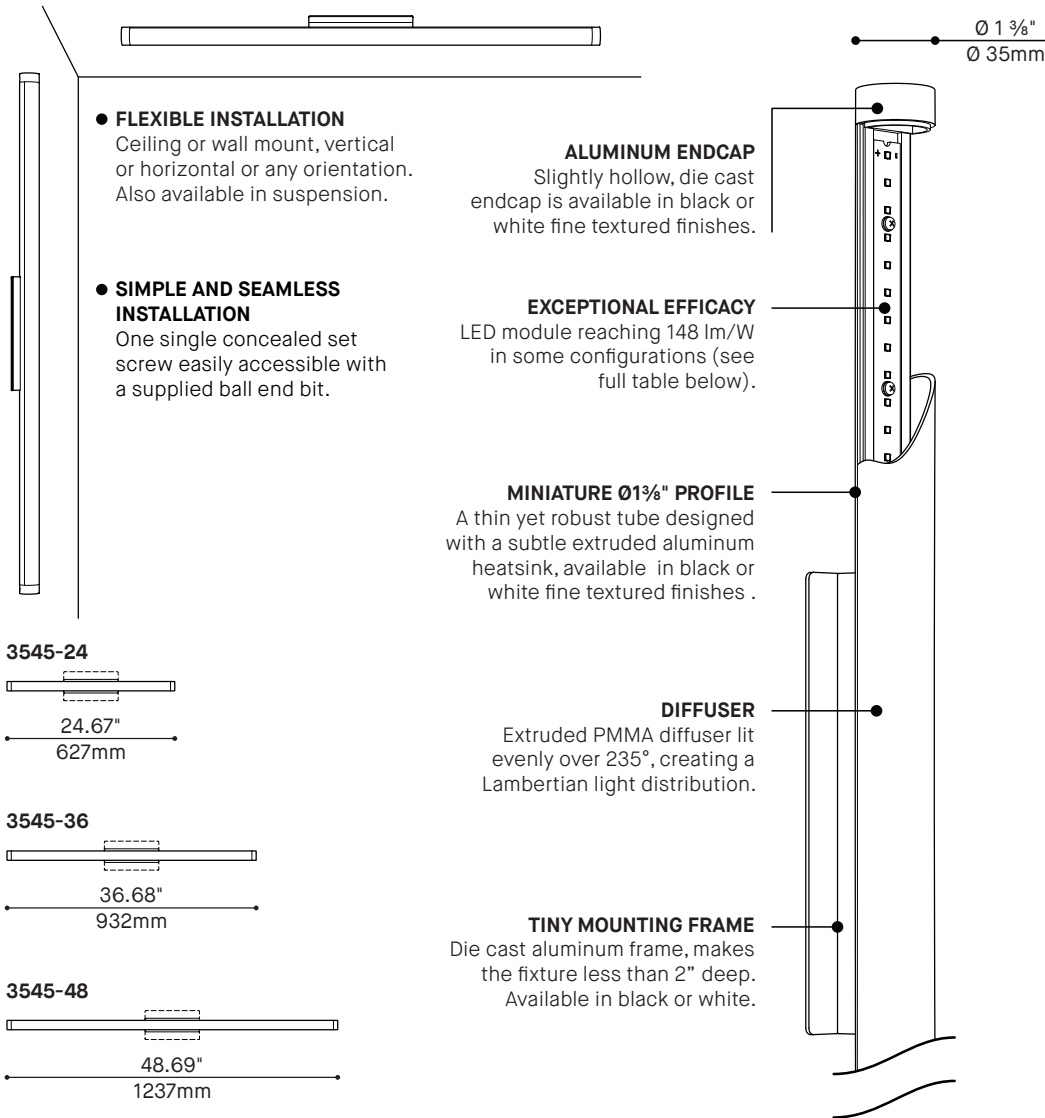
Mr. Likey is a Hong Kong artist who has been creating colorful, cartoonish illustrations since the 1980s. His work is characterized by bright colors and a playful, whimsical style. He has exhibited his art in various galleries and museums, and his illustrations have been featured in books and magazines. Mr. Likey's art is a celebration of life and the joy of everyday moments.

© Mr. Likey



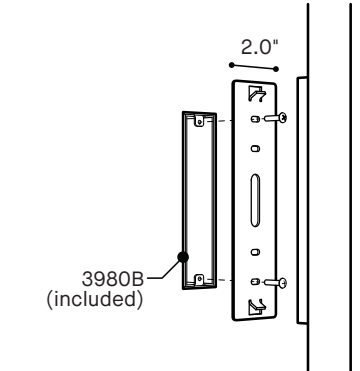
TECHNICAL DATA

EXPO 3545



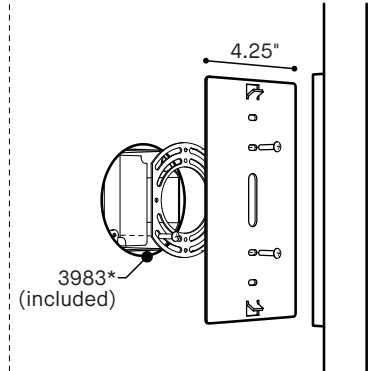
SL : SLIM MOUNTING PLATE

6.25" x 1.5"
158mm x 38mm



WI : WIDE MOUNTING PLATE

Ø4"
Ø102mm



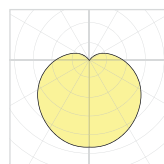
*Designed to replace your existing junction box.

PRODUCT SPECIFICATION	3545-24 LOW - REG - HO - SHO	3545-36 LOW - REG - HO - SHO	3545-48 LOW - REG - HO - SHO
PERFORMANCE			
SYSTEM WATTAGE	4,7 W - 9,1 W - 14,2 W - 18,8 W	6,7 W - 13,7 W - 20,2 W - 25,7 W	9,4 W - 17,6 W - 28,5 W - 37,7 W
DELIVERED LUMENS (4000K - WHE)	696 LM - 1214 LM - 1901 LM - 2411 LM	1002 LM - 1928 LM - 2721 LM - 3338 LM	1391 LM - 2481 LM - 3801 LM - 4822 LM
DELIVERED LUMENS/FEET (4000K - WHE)	364 LM/FT - 636 LM/FT - 996 LM/FT - 1263 LM/FT	344 LM/FT - 663 LM/FT - 936 LM/FT - 1148 LM/FT	356 LM/FT - 635 LM/FT - 973 LM/FT - 1234 LM/FT
EFFICACY	143 LM/W - 133 LM/W - 133 LM/W - 128 LM/W	148 LM/W - 141 LM/W - 134 LM/W - 130 LM/W	148 LM/W - 141 LM/W - 133 LM/W - 128 LM/W
OTHER INFORMATIONS			
LUMINAIRE'S WEIGHT	2,2 LBS / 1 KG	2,75 LBS / 1,25 KG	3,3 LBS / 1,5 KG
L70 (LUMEN MAINTENANCE)	> 60 000 HRS	> 60 000 HRS	> 60 000 HRS

EFFICACY MULTIPLIERS

CRI	CCT	FACTOR
80+	4000K	1.00
80+	3500K	0.98
80+	3000K	0.94
80+	2700K	0.91
90+	4000K	0.88
90+	3500K	0.85
90+	3000K	0.81
90+	2700K	0.77

LIGHT DISTRIBUTION



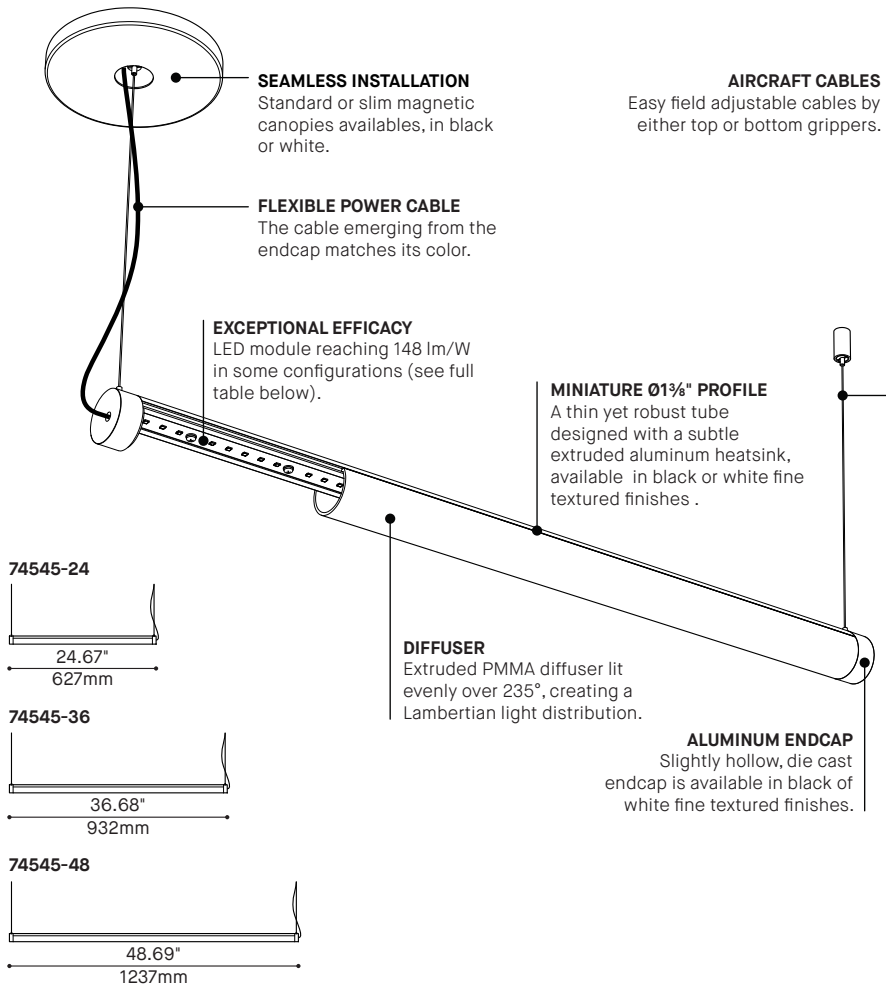
3545



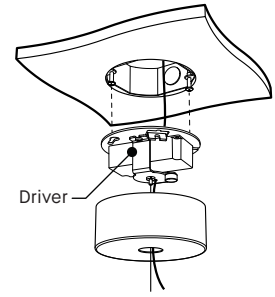
Visit our website for warranty terms and conditions.



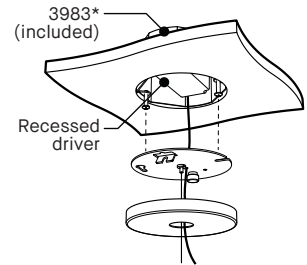
TECHNICAL DATA



RC1 : STANDARD
Canopy 2471H (Ø4.5" x 1.75")



RC2 : SLIM
Canopy 2471C (Ø4.5" x 0.5")



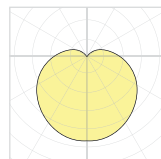
*Deep junction box designed to replace your existing junction box.

PRODUCT SPECIFICATION	74545-24 LOW - REG - HO - SHO	74545-36 LOW - REG - HO - SHO	74545-48 LOW - REG - HO - SHO
PERFORMANCE			
SYSTEM WATTAGE	4,7 W - 9,1 W - 14,2 W - 18,8 W	6,7 W - 13,7 W - 20,2 W - 25,7 W	9,4 W - 17,6 W - 28,5 W - 37,7 W
DELIVERED LUMENS (4000K - WHE)	696 LM - 1214 LM - 1901 LM - 2411 LM	1002 LM - 1928 LM - 2721 LM - 3338 LM	1391 LM - 2481 LM - 3801 LM - 4822 LM
DELIVERED LUMENS/FEET (4000K - WHE)	364 LM/FT - 636 LM/FT - 996 LM/FT - 1263 LM/FT	344 LM/FT - 663 LM/FT - 936 LM/FT - 1148 LM/FT	356 LM/FT - 635 LM/FT - 973 LM/FT - 1234 LM/FT
EFFICACY	143 LM/W - 133 LM/W - 133 LM/W - 128 LM/W	148 LM/W - 141 LM/W - 134 LM/W - 130 LM/W	148 LM/W - 141 LM/W - 133 LM/W - 128 LM/W
OTHER INFORMATIONS			
LUMINAIRE'S WEIGHT	2,2 LBS / 1 KG	2,75 LBS / 1,25 KG	3,3 LBS / 1,5 KG
L70 (LUMEN MAINTENANCE)	> 60 000 HRS	> 60 000 HRS	> 60 000 HRS

EFFICACY MULTIPLIERS

CRI	CCT	FACTOR
80+	4000K	1.00
80+	3500K	0.98
80+	3000K	0.94
80+	2700K	0.91
90+	4000K	0.88
90+	3500K	0.85
90+	3000K	0.81
90+	2700K	0.77

LIGHT DISTRIBUTION



74545



Visit our website for warranty terms and conditions.







EXPO 3545

PROJECT PROJET
SPEC TYPE
NOTES



FINISH FINI



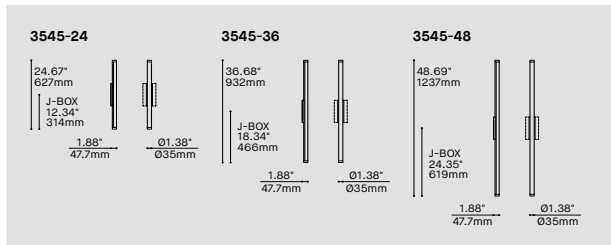
BLKE WHE

FAMILY FAMILLE



3545 (CEILING)

7454 (SUSPENDED)



ORDERING SPECIFICATION SPÉCIFICATION DE COMMANDE

CODE

MODEL MODÈLE

3545-24	EXPO 24"
3545-36	EXPO 36"
3545-48	EXPO 48"

LIGHT SOURCE SOURCE LUMINEUSE

LED.LO	LOW OUTPUT
LED	REGULAR OUTPUT
LED.HO	HIGH OUTPUT
LED.SHO	SUPER HIGH OUTPUT

COLOR TEMPERATURE TEMPÉRATURE DE COULEUR

27*	2700K
30	3000K
35	3500K
40	4000K

* LONGER LEAD TIME MAY APPLY, PLEASE CONTACT YOUR EUREKA REPRESENTATIVE

COLOR RENDERING INDEX (CRI) INDICE DE RENDU DE COULEUR (IRC)

80	80+ CRI
90*	90+ CRI

* LONGER LEAD TIME MAY APPLY, PLEASE CONTACT YOUR EUREKA REPRESENTATIVE

VOLTAGE VOLTAGE

120V	120 VOLT
277V	277 VOLT

CONTROL OPTION OPTION DE CONTRÔLE

DV	0-10V DIMMING (120V-277V)
DP	PHASE DIMMING (120V ONLY)
NLTAIR2*	NLIGHT AIR CONTROL GEN 2
NLIGHT*	NLIGHT WIRED CONTROL

* NOT AVAILABLE WITH 3545-24 LOW, 3545-24 REG, 3545-36 LOW

* REQUIRES WI COVER PLATE.

* NLIGHT INTEGRATION REQUIRES A REMOTE POWER PACK (39NLAB OR NLTAIR2 OR 39NLWB FOR NLIGHT).

* EMERGENCY BATTERY NOT AVAILABLE WITH NLIGHT OPTIONS

REFER TO NLIGHT GUIDE AND INSTALLATION SHEET FOR ALL REQUIREMENTS.

EMERGENCY BATTERY BATTERIE D'URGENCE

EM DRIVER BOX INCLUDED, INSTALLED REMOTELY. SEE EM GUIDE FOR DETAILS.

EMB EMERGENCY BATTERY FOR REMOTE BOX

MOUNTING MONTAGE

SL	SLIM COVER PLATE (2.00" X 8.00") – FOR INSTALLATION WITH MINI JUNCTION BOX (3980B)
WI*	WIDE COVER PLATE (4.25" X 8.00") – FOR INSTALLATION WITH DEEP JUNCTION BOX (3983) OR WITH NLIGHT CONTROL OPTION

* WI NOT AVAILABLE WITH 3545-24 LOW (DV) AND 3545-24 REGULAR (DV) OUTPUT

FINISH FINI

BLKE	BLACK FINE TEXTURE
WHE	WHITE FINE TEXTURE
RAL*	PLEASE SPECIFY RAL CODE

* LONGER LEAD TIME MAY APPLY, PLEASE CONTACT YOUR EUREKA REPRESENTATIVE

DIFFUSER FINISH FINI DIFFUSEUR

WH

WH WHITE

ACCESSORY ACCESSOIRE

ALL ACCESSORIES ARE AVAILABLE FOR ADVANCE SHIPPING

3980B MINI JUNCTION BOX (PROVIDED WITH SLIM COVER PLATE)

3983 DEEP JUNCTION BOX (PROVIDED WITH WIDE COVER PLATE)

39NLAB* NLIGHT AIR GEN 2 REMOTE POWER PACK

39NLWB* NLIGHT WIRED REMOTE POWER PACK

* FOR CHICAGO PLENUM INSTALLATION, PLEASE CONTACT YOUR EUREKA REPRESENTATIVE.

EMERGENCY BATTERY ACCESSORY ACCESSOIRE BATTERIE D'URGENCE

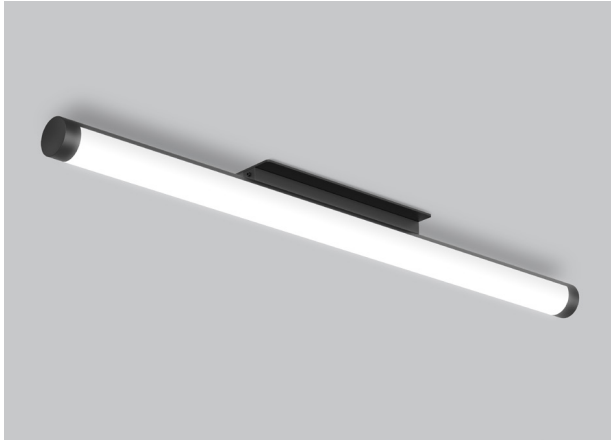
3981EA ELECTRICAL BOX FOR EMB EMERGENCY BATTERY

PRODUCT CHARACTERISTICS CARACTÉRISTIQUES DU PRODUIT

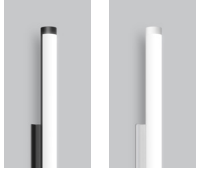


EXPO 3545

PROJECT PROJET
SPEC TYPE
NOTES



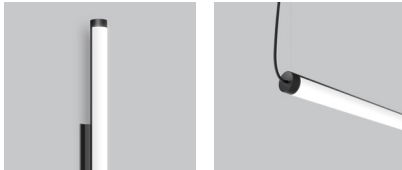
FINISH FINI



BLKE

WHE

FAMILY FAMILLE



3545 (WALL)

74545 (SUSPENDED)

3545-24	3545-36	3545-48
1.88" 47.7mm	1.88" 47.7mm	1.88" 47.7mm
Ø1.38" Ø35mm	Ø1.38" Ø35mm	Ø1.38" Ø35mm
24.67" 627mm	36.68" 932mm	48.69" 1237mm
J-BOX 12.34" 314mm	J-BOX 18.34" 466mm	J-BOX 24.35" 619mm

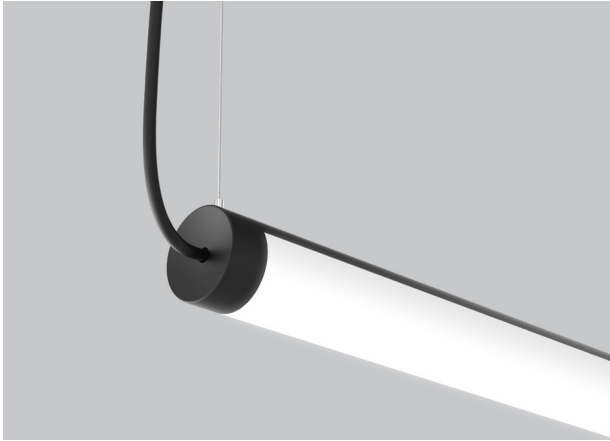
ORDERING SPECIFICATION SPÉCIFICATION DE COMMANDE

CODE

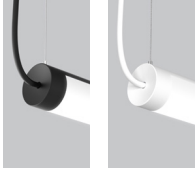
MODEL MODÈLE								
3545-24	EXPO 24"							
3545-36	EXPO 36"							
3545-48	EXPO 48"							
LIGHT SOURCE SOURCE LUMINEUSE								
LED.LO	LOW OUTPUT							
LED	REGULAR OUTPUT							
LED.HO	HIGH OUTPUT							
LED.SHO	SUPER HIGH OUTPUT							
COLOR TEMPERATURE TEMPÉRATURE DE COULEUR								
27*	2700K							
30	3000K							
35	3500K							
40	4000K							
* LONGER LEAD TIME MAY APPLY, PLEASE CONTACT YOUR EUREKA REPRESENTATIVE								
COLOR RENDERING INDEX (CRI) INDICE DE RENDU DE COULEUR (IRC)								
80	80+ CRI							
90*	90+ CRI							
* LONGER LEAD TIME MAY APPLY, PLEASE CONTACT YOUR EUREKA REPRESENTATIVE								
VOLTAGE VOLTAGE								
120V	120 VOLT							
277V	277 VOLT							
CONTROL OPTION OPTION DE CONTRÔLE								
DV	0-10V DIMMING (120V-277V)							
DP	PHASE DIMMING (120V ONLY)							
NLTAIR2*	NLIGHT AIR CONTROL GEN 2							
NLIGHT*	NLIGHT WIRED CONTROL							
* NOT AVAILABLE WITH 3545-24 LOW, 3545-24 REG, 3545-36 LOW								
* REQUIRES WI COVER PLATE.								
* NLIGHT INTEGRATION REQUIRES A REMOTE POWER PACK (39NLAB FOR NLTAIR2 OR 39NLWB FOR NLIGHT).								
* EMERGENCY BATTERY NOT AVAILABLE WITH NLIGHT OPTIONS								
REFER TO NLIGHT GUIDE AND INSTALLATION SHEET FOR ALL REQUIREMENTS.								
EMERGENCY BATTERY BATTERIE D'URGENCE								
EM DRIVER BOX INCLUDED, INSTALLED REMOTELY. SEE EM GUIDE FOR DETAILS.								
EMB	EMERGENCY BATTERY FOR REMOTE BOX							
MOUNTING MONTAGE								
SL	SLIM COVER PLATE (2.00" X 8.00") – FOR INSTALLATION WITH MINI JUNCTION BOX (3980B)							
WI*	WIDE COVER PLATE (4.25" X 8.00") – FOR INSTALLATION WITH DEEP JUNCTION BOX (3983) OR WITH NLIGHT CONTROL OPTION							
* WI NOT AVAILABLE WITH 3545-24 LOW (DV) AND 3545-24 REGULAR (DV) OUTPUT								
FINISH FINI								
BLKE	BLACK FINE TEXTURE							
WHE	WHITE FINE TEXTURE							
RAL*	PLEASE SPECIFY RAL CODE							
* LONGER LEAD TIME MAY APPLY, PLEASE CONTACT YOUR EUREKA REPRESENTATIVE								
DIFFUSER FINISH FINI DIFFUSEUR		WH						
WH	WHITE							
ACCESSORY ACCESSOIRE								
ALL ACCESSORIES ARE AVAILABLE FOR ADVANCE SHIPPING								
3980B	MINI JUNCTION BOX (PROVIDED WITH SLIM COVER PLATE)							
3983	DEEP JUNCTION BOX (PROVIDED WITH WIDE COVER PLATE)							
39NLAB*	NLIGHT AIR GEN 2 REMOTE POWER PACK							
39NLWB*	NLIGHT WIRED REMOTE POWER PACK							
*FOR CHICAGO PLENUM INSTALLATION, PLEASE CONTACT YOUR EUREKA REPRESENTATIVE.								
EMERGENCY BATTERY ACCESSORY ACCESSOIRE BATTERIE D'URGENCE								
3981EA	ELECTRICAL BOX FOR EMB EMERGENCY BATTERY							
PRODUCT CHARACTERISTICS CARACTÉRISTIQUES DU PRODUIT								
BIM	DIM	EMB	IES	LED	3980B	3983	Wi-Fi	n
					6.25" (158mm)	Ø 4.00" (102mm)		
					X 1.5" (38mm)			

EXPO 74545

PROJECT PROJET
SPEC TYPE
NOTES



FINISH FINI



BLKE

WHE

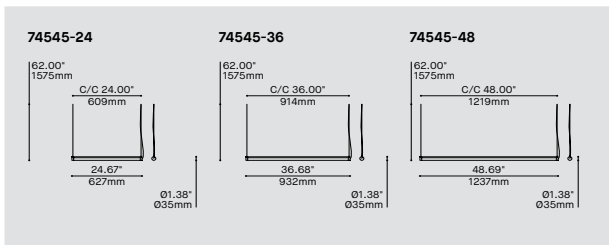
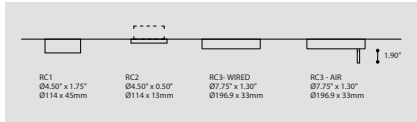
FAMILY FAMILLE



3545 (WALL)

3545 (CEILING)

MOUNTING OPTIONS OPTIONS DE MONTAGE



ORDERING SPECIFICATION	SPÉCIFICATION DE COMMANDE	CODE
MODEL MODÈLE		
74545-24	EXPO 24"	
74545-36	EXPO 36"	
74545-48	EXPO 48"	
LIGHT SOURCE SOURCE LUMINEUSE		
LED.LO	LOW OUTPUT	
LED	REGULAR OUTPUT	
LED.HO	HIGH OUTPUT	
LED.SHO	SUPER HIGH OUTPUT	
COLOR TEMPERATURE TEMPÉRATURE DE COULEUR		
27*	2700K	
30	3000K	
35	3500K	
40	4000K	
* LONGER LEAD TIME MAY APPLY, PLEASE CONTACT YOUR EUREKA REPRESENTATIVE		
COLOR RENDERING INDEX (CRI) INDICE DE RENDU DE COULEUR (IRC)		
80	80+ CRI	
90*	90+ CRI	
* LONGER LEAD TIME MAY APPLY, PLEASE CONTACT YOUR EUREKA REPRESENTATIVE		
VOLTAGE VOLTAGE		
120V	120 VOLT	
277V	277 VOLT	
CONTROL OPTION OPTION DE CONTRÔLE		
DV	0-10V DIMMING (120V-277V)	
DP	PHASE DIMMING (120V ONLY)	
NLTAIR2*	NLIGHT AIR CONTROL GEN 2	
NLIGHT*	NLIGHT WIRED CONTROL	
* NOT AVAILABLE WITH 74545-24 LOW, 74545-24 REG, 74545-36 LOW * REQUIRES RC3 CANOPY. REFER TO NLIGHT GUIDE AND INSTALLATION SHEET FOR ALL REQUIREMENTS.		
EMERGENCY BATTERY BATTERIE D'URGENCE		
EM DRIVER BOX INCLUDED, INSTALLED REMOTELY. SEE EM GUIDE FOR DETAILS.		
EMB*	EMERGENCY BATTERY FOR REMOTE BOX	
* 3981EA ACCESSORY IS REQUIRED		
CABLE CÂBLE		AC
AC*	AIRCRAFT MOUNTING AND WHITE OR BLACK CABLE, FIELD ADJUSTABLE	
* FOR WHITE STRUCTURE FINISH: WHITE CABLE, FOR BLACK STRUCTURE FINISH: BLACK CABLE		
CABLE LENGTH LONGUEUR DE CÂBLE		
60	60" AIRCRAFT CABLE (STD LENGTH)	
**	CUSTOM AIRCRAFT CABLE LENGTH (PLEASE SPECIFY)	
FOR OVERALL LENGTH, PLEASE CONTACT YOUR EUREKA REPRESENTATIVE		
MOUNTING MONTAGE		
	ROUND CANOPY / PAVILLON ROND	
RC1	SCREWLESS 1.75" CANOPY (2471H)	
RC2*	SCREWLESS 0.5" CANOPY (2471C)	
RC3	NLIGHT SCREWLESS 1.75" CANOPY (2474H)	
* 3983 ACCESSORY PROVIDED FOR 2471C CANOPY * RC2 NOT AVAILABLE FOR 74545-24 LOW (DV) AND 74545-24 REGULAR (DV) OUTPUT		
CANOPY FINISH FINI PAVILLON		
BLKE	BLACK FINE TEXTURE	
WHE	WHITE FINE TEXTURE	
FINISH FINI		
BLKE	BLACK FINE TEXTURE	
WHE	WHITE FINE TEXTURE	
RAL*	PLEASE SPECIFY RAL CODE	
* LONGER LEAD TIME MAY APPLY, PLEASE CONTACT YOUR EUREKA REPRESENTATIVE		
DIFFUSER FINISH FINI DIFFUSEUR		WH
WH	WHITE	
ACCESSORY ACCESSOIRE		
3983*	DEEP JUNCTION BOX (PROVIDED FOR 2471C CANOPY)	
* JUNCTION BOX IS AVAILABLE FOR ADVANCE SHIPPING		
EMERGENCY BATTERY ACCESSORY ACCESSOIRE BATTERIE D'URGENCE		
3981EA	ELECTRICAL BOX FOR EMB EMERGENCY BATTERY	

PHOTOMETRIC REPORT

EXPO 24"

74545-24-LEDLO-40-WHE

CCT (K): 4000
 Delivered Lumens (lm): 696
 System wattage (W): 4.7
 Distribution: Direct
 Delivered Efficacy (lm/W): 143

3545-24-LEDLO-40-WHE

CCT (K): 4000
 Delivered Lumens (lm): 696
 System wattage (W): 4.7
 Distribution: Direct
 Delivered Efficacy (lm/W): 143

74545-24-LED-40-WHE

CCT (K): 4000
 Delivered Lumens (lm): 1214
 System wattage (W): 9.1
 Distribution: Direct
 Delivered Efficacy (lm/W): 133

3545-24-LED-40-WHE

CCT (K): 4000
 Delivered Lumens (lm): 1214
 System wattage (W): 9.1
 Distribution: Direct
 Delivered Efficacy (lm/W): 133

74545-24-LEDHO-40-WHE

CCT (K): 4000
 Delivered Lumens (lm): 1901
 System wattage (W): 14.2
 Distribution: Direct
 Delivered Efficacy (lm/W): 133

3545-24-LEDHO-40-WHE

CCT (K): 4000
 Delivered Lumens (lm): 1901
 System wattage (W): 14.2
 Distribution: Direct
 Delivered Efficacy (lm/W): 133

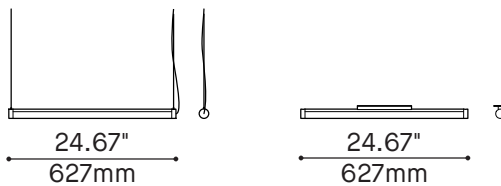
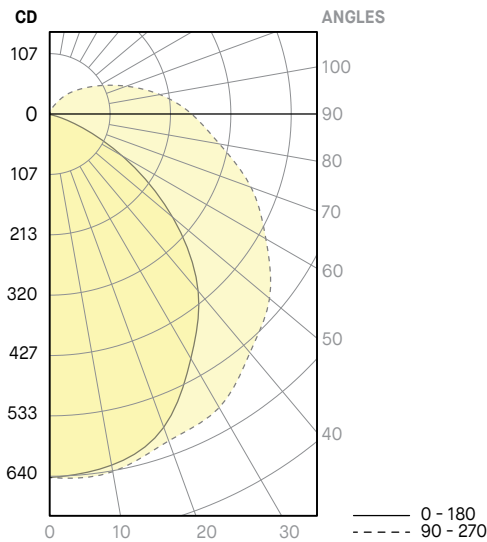
74545-24-LED SH-40-WHE*

CCT (K): 4000
 Delivered Lumens (lm): 2411
 System wattage (W): 18.8
 Distribution: Direct
 Delivered Efficacy (lm/W): 128

3545-24-LED SH-40-WHE*

CCT (K): 4000
 Delivered Lumens (lm): 2411
 System wattage (W): 18.8
 Distribution: Direct
 Delivered Efficacy (lm/W): 128

*LED SH (Super High Output) photometric distribution below.



PHOTOMETRIC REPORT

EXPO 36"

74545-36-LEDLO-40-WHE

CCT (K): 4000
 Delivered Lumens (lm): 1002
 System wattage (W): 6.7
 Distribution: Direct
 Delivered Efficacy (lm/W): 148

3545-36-LEDLO-40-WHE

CCT (K): 4000
 Delivered Lumens (lm): 1002
 System wattage (W): 6.7
 Distribution: Direct
 Delivered Efficacy (lm/W): 148

74545-36-LED-40-WHE

CCT (K): 4000
 Delivered Lumens (lm): 1928
 System wattage (W): 13.7
 Distribution: Direct
 Delivered Efficacy (lm/W): 141

3545-36-LED-40-WHE

CCT (K): 4000
 Delivered Lumens (lm): 1928
 System wattage (W): 13.7
 Distribution: Direct
 Delivered Efficacy (lm/W): 141

74545-36-LEDHO-40-WHE

CCT (K): 4000
 Delivered Lumens (lm): 2721
 System wattage (W): 20.2
 Distribution: Direct
 Delivered Efficacy (lm/W): 134

3545-36-LEDHO-40-WHE

CCT (K): 4000
 Delivered Lumens (lm): 2721
 System wattage (W): 20.2
 Distribution: Direct
 Delivered Efficacy (lm/W): 134

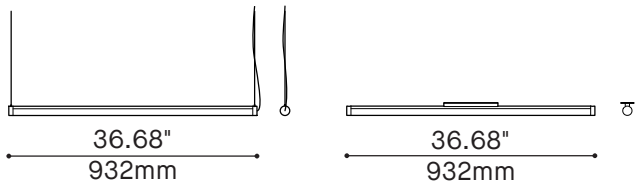
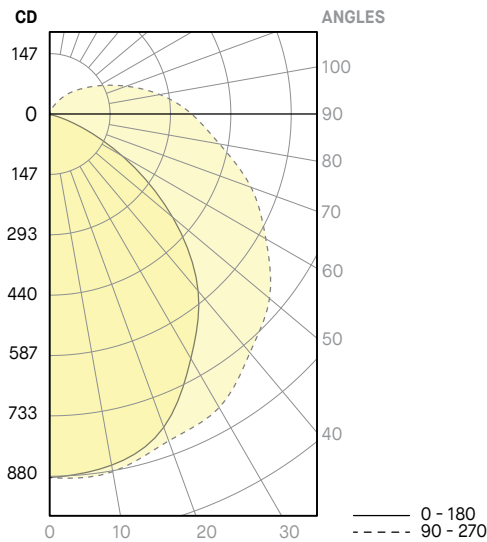
74545-36-LED SH-40-WHE*

CCT (K): 4000
 Delivered Lumens (lm): 3338
 System wattage (W): 25.7
 Distribution: Direct
 Delivered Efficacy (lm/W): 130

3545-36-LED SH-40-WHE*

CCT (K): 4000
 Delivered Lumens (lm): 3338
 System wattage (W): 25.7
 Distribution: Direct
 Delivered Efficacy (lm/W): 130

*LED SH (Super High Output) photometric distribution below.



PHOTOMETRIC REPORT

EXPO 48"

74545-48-LEDLO-40-WHE

CCT (K): 4000
 Delivered Lumens (lm): 1391
 System wattage (W): 9.4
 Distribution: Direct
 Delivered Efficacy (lm/W): 148

3545-48-LEDLO-40-WHE

CCT (K): 4000
 Delivered Lumens (lm): 1391
 System wattage (W): 9.4
 Distribution: Direct
 Delivered Efficacy (lm/W): 148

74545-48-LED-40-WHE

CCT (K): 4000
 Delivered Lumens (lm): 2481
 System wattage (W): 17.6
 Distribution: Direct
 Delivered Efficacy (lm/W): 141

3545-48-LED-40-WHE

CCT (K): 4000
 Delivered Lumens (lm): 2481
 System wattage (W): 17.6
 Distribution: Direct
 Delivered Efficacy (lm/W): 141

74545-48-LEDHO-40-WHE

CCT (K): 4000
 Delivered Lumens (lm): 3801
 System wattage (W): 28.5
 Distribution: Direct
 Delivered Efficacy (lm/W): 133

3545-48-LEDHO-40-WHE

CCT (K): 4000
 Delivered Lumens (lm): 3801
 System wattage (W): 28.5
 Distribution: Direct
 Delivered Efficacy (lm/W): 133

74545-48-LED SH-40-WHE*

CCT (K): 4000
 Delivered Lumens (lm): 4822
 System wattage (W): 37.7
 Distribution: Direct
 Delivered Efficacy (lm/W): 128

3545-48-LED SH-40-WHE*

CCT (K): 4000
 Delivered Lumens (lm): 4822
 System wattage (W): 37.7
 Distribution: Direct
 Delivered Efficacy (lm/W): 128

*LED SH (Super High Output) photometric distribution below.

